

Certificate Autoenrollment for EJBCA Enterprise

Combine the full flexibility of EJBCA Enterprise with **Active Directory**

With the Certificate Autoenrollment for EJBCA Enterprise you can add several templates and match them with EJBCAs Profiles, and you can support multiple use cases. Yes, you can now run this add-on on a Linux server, if you like to.



Certificate Autoenrollment for EJBCA Enterprise

For many enterprises, having the ability to use and integrate with Active Directory is a must-have. Now you can have your EJBCA Enterprise deployment working smoothly with Active Directory (AD) with the help of Certificate Autoenrollment.

Certificate Autoenrollment for EJBCA

With Certificate Autoenrollment for EJBCA you will be able to run all administration in your AD and all your PKI in EJBCA. That includes VPN, Windows AD, Remote Access, IoT etc., you name it. This, along with the built in transparency and user friendliness for AD users will save you a lot of time and headaches.

Redirecting servlet

In a nutshell, the Certificate Autoenrollment add-on works as a servlet that redirects Microsoft Autoenrollment calls, that would go to Microsoft CA, and instead calls EJBCA Enterprise. The auto enrollment servlet is enhanced to match and improve the capabilities of a Microsoft CA.

Multiple use cases and enhanced mapping

With the Certificate Autoenrollment for EJBCA Enterprise you can add several Microsoft templates and match them with EJBCAs Profiles, and you can support multiple use cases. The enhanced mapping is possible

to customize trough configuration profiles. Yes, you can now run this add-on a Linux server, if you like to.

To assure consistency and to simplify work, the Certificate Autoenrollment add-on fetches information from Active Directory for values such as Full Name, DNS host name, fully distinguished name, email, NETBIOS name, domain DNS root name, etc. There is also an option to automatically publish newly issued certificates to Active Directory into AD user objects.

In practice, you can now seamlessly use EJBCA Enterprise for a variety of use cases, for instance Kerberos Authentication, Domain Email Replication, or Domain Controller.

Background

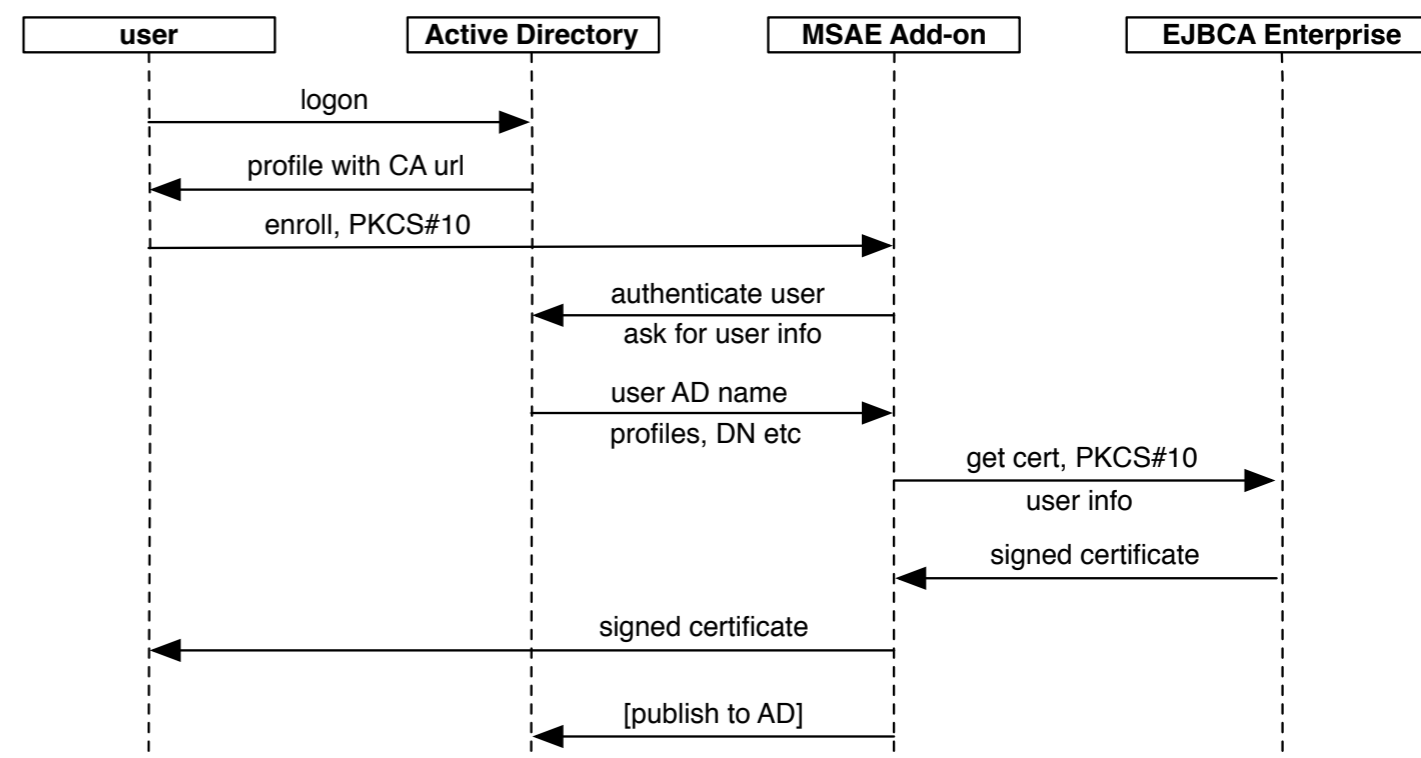
The support for integration with Microsoft Active Directory and Autoenrollment in EJBCA has, until today, needed hands-on efforts, and there were some limitations. This is why we release major enhancements to this add-on for EJBCA Enterprise. Now you can combine the full flexibility of EJBCA Enterprise with different AD users and machines, even supporting multiple use cases.

Key Features

- Compatible with
 - Microsoft server 2008, 2012 or later
 - EJBCA Enterprise 6.7 or later



The PrimeKey team are some of the world's best minds in IT Security and we are passionate about what we do.





About PrimeKey

PrimeKey Solutions AB is one of the world's leading companies for PKI solutions. PrimeKey has developed successful solutions, such as EJBCA Enterprise, SignServer Enterprise and PrimeKey PKI Appliance. PrimeKey is a pioneer in open source security software that provides businesses and organisations around the world with the ability to implement security solutions such as e-ID, e-Passports, authentication, digital signatures, unified digital identities and validation. PrimeKey has its head office in Stockholm, Sweden.

© PrimeKey Solutions AB
All rights reserved
sales@primekey.com
+46 873 561 01

www.primekey.com

